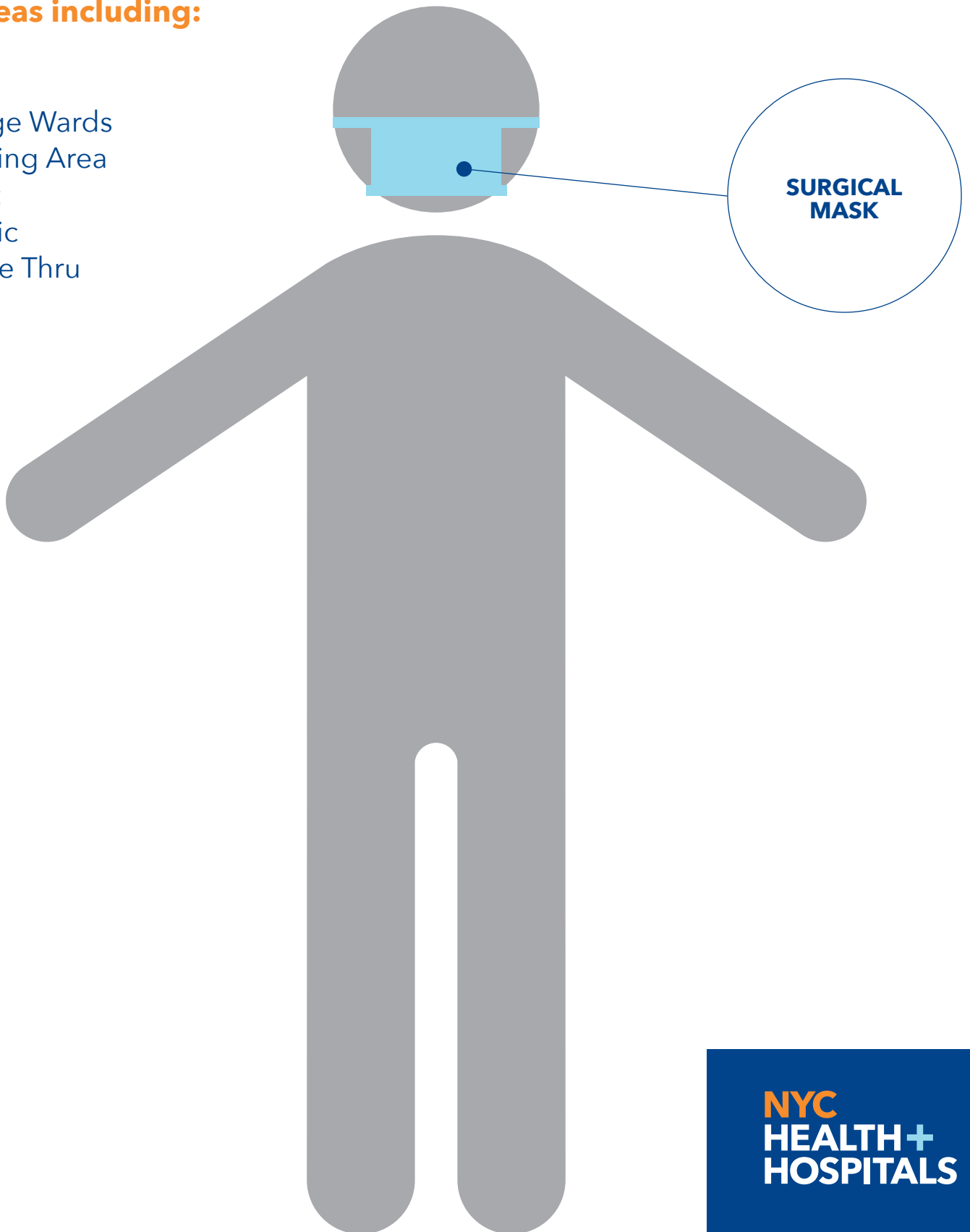


All areas including:

- + ED
- + ICU
- + Surge Wards
- + Testing Area
- + Tent
- + Clinic
- + Drive Thru



COVID-19

Coronavirus Disease

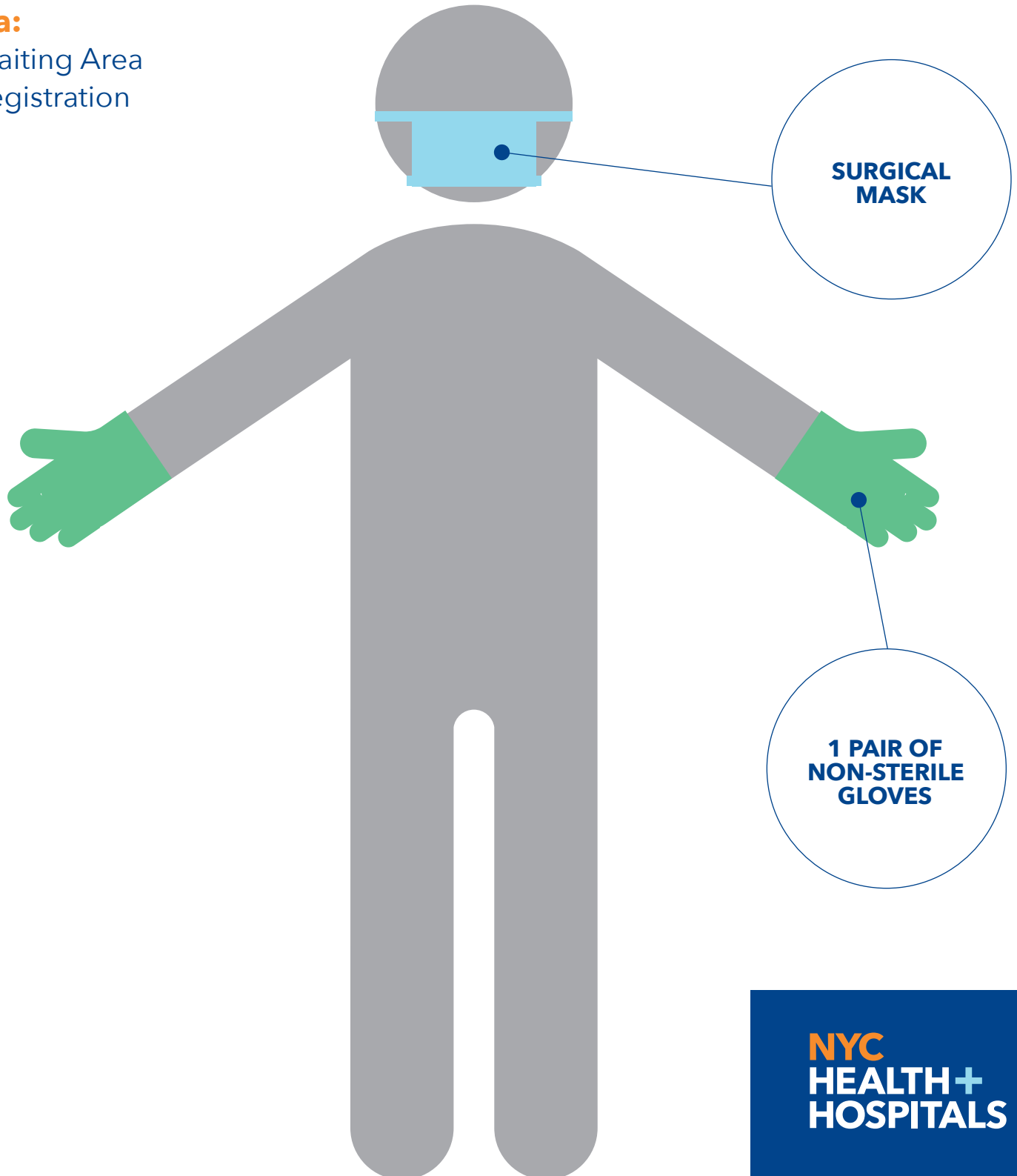
PERSONAL PROTECTIVE EQUIPMENT FOR STAFF

PATIENT FACING STAFF

Includes hospital police, registration desk staff

Area:

- + Waiting Area
- + Registration



NYC
HEALTH+
HOSPITALS

COVID-19

Coronavirus Disease

PERSONAL PROTECTIVE EQUIPMENT FOR STAFF

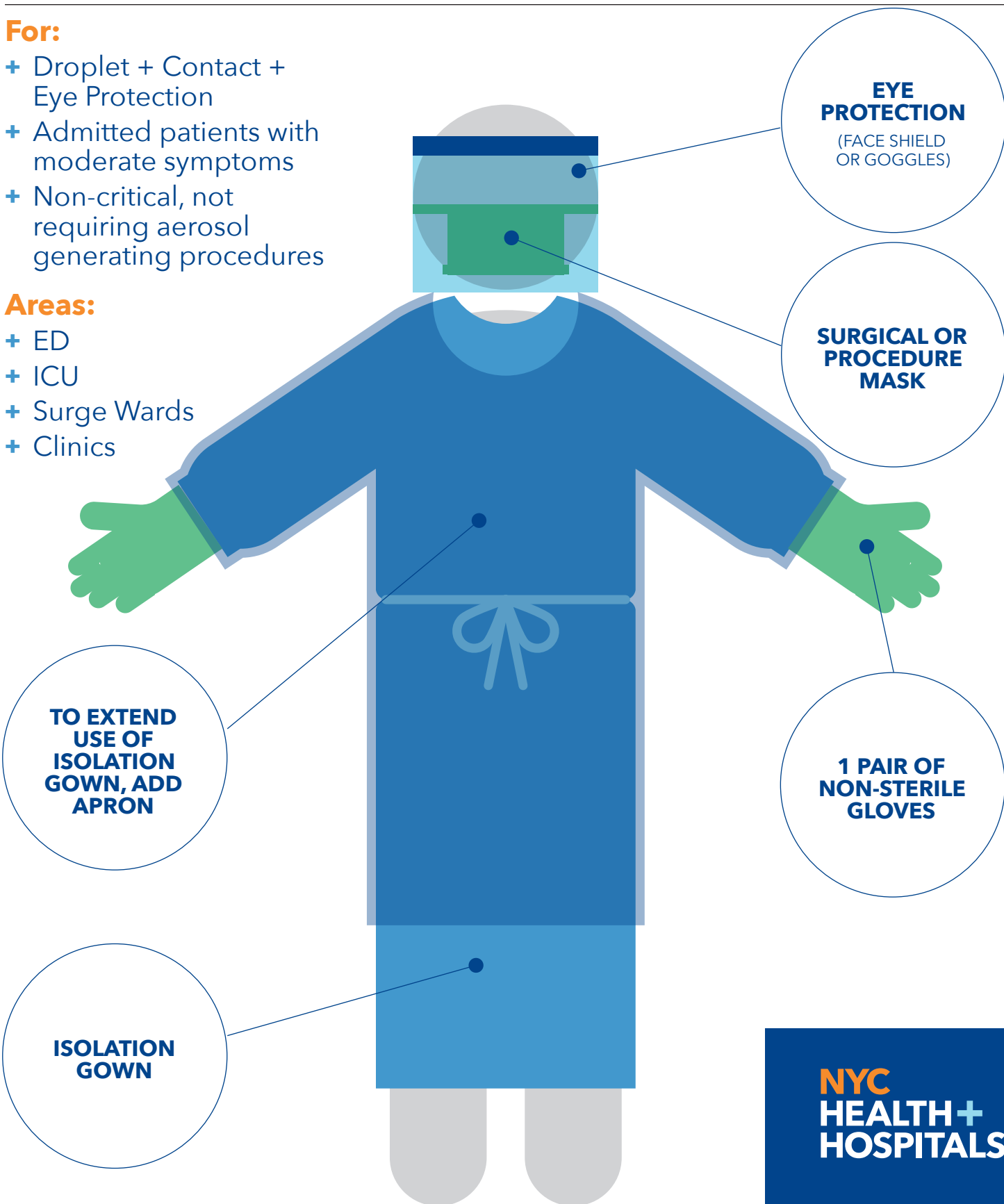
CLINICAL: DROPLET + CONTACT + EYE PROTECTION

For:

- + Droplet + Contact + Eye Protection
- + Admitted patients with moderate symptoms
- + Non-critical, not requiring aerosol generating procedures

Areas:

- + ED
- + ICU
- + Surge Wards
- + Clinics



COVID-19

Coronavirus Disease

PERSONAL PROTECTIVE EQUIPMENT FOR STAFF

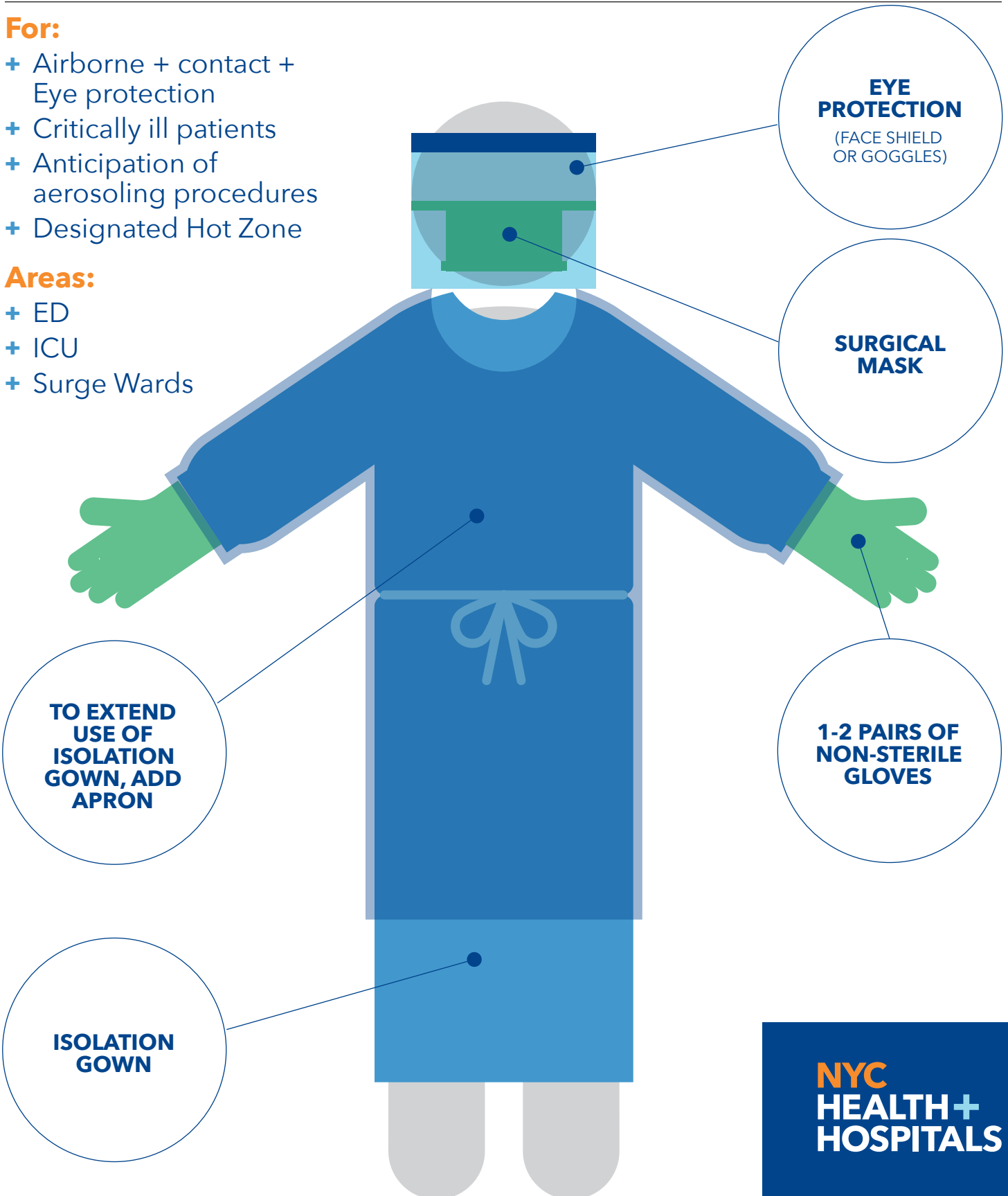
CLINICAL: AIRBORNE + CONTACT + EYE PROTECTION

For:

- + Airborne + contact + Eye protection
- + Critically ill patients
- + Anticipation of aerosoling procedures
- + Designated Hot Zone

Areas:

- + ED
- + ICU
- + Surge Wards



COVID-19

Coronavirus Disease

PERSONAL PROTECTIVE EQUIPMENT FOR STAFF

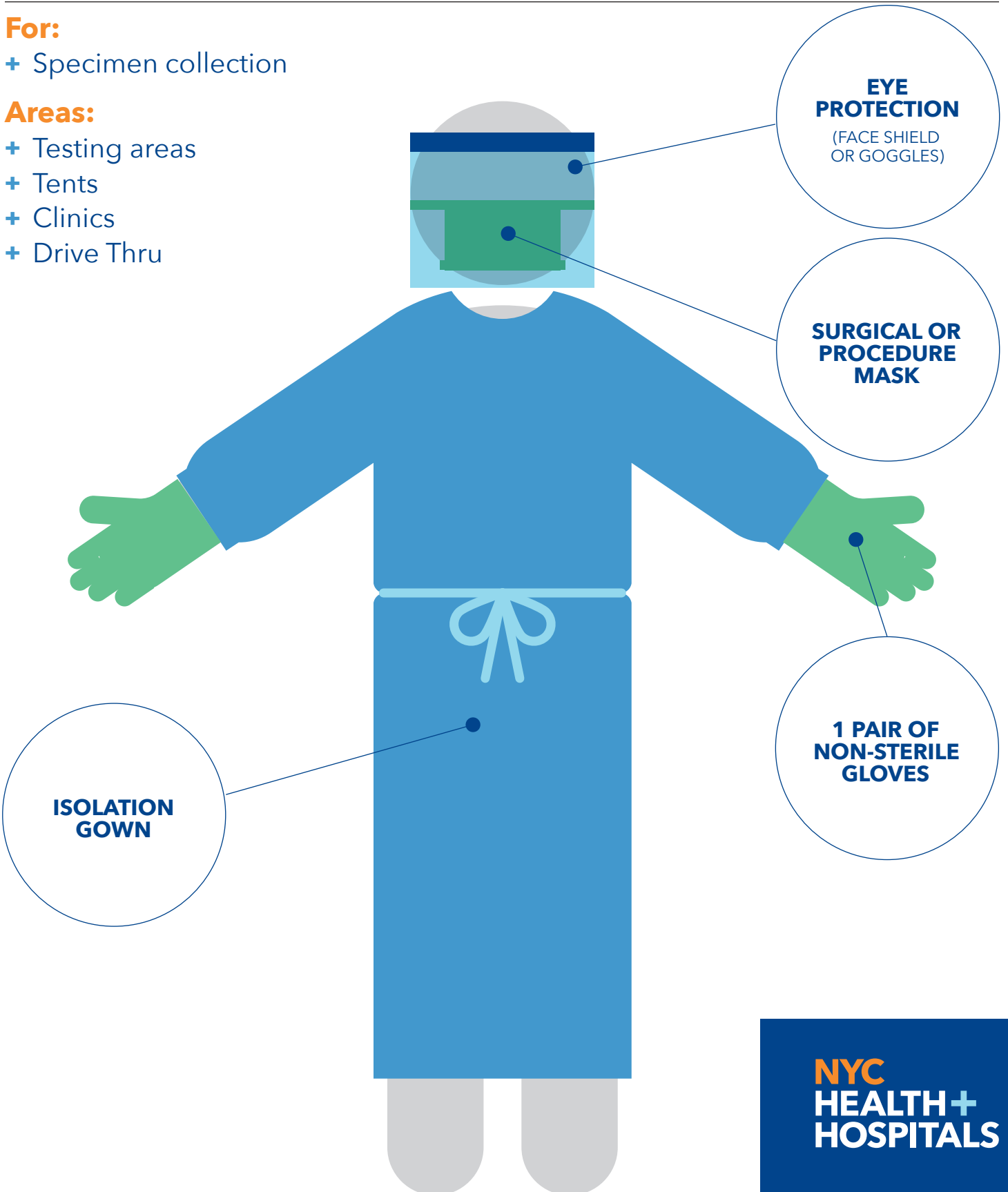
CLINICAL: SPECIMEN COLLECTION

For:

- + Specimen collection

Areas:

- + Testing areas
- + Tents
- + Clinics
- + Drive Thru



COVID-19

Coronavirus Disease

PERSONAL PROTECTIVE EQUIPMENT FOR STAFF

CLINICAL: CLEANING

For:

+ Cleaning

All areas including:

- + ED
- + ICU
- + Surge Wards
- + Testing Area
- + Tent
- + Clinic
- + Drive Thru

