

# PREVENTING COVID-19 CROSS-CONTAMINATION

## General Tips



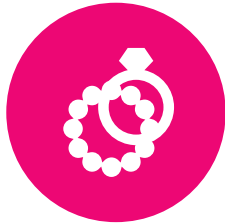
Always perform hand hygiene



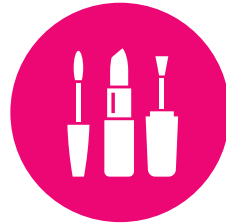
Keep hands away from face and limit surfaces touched



Avoid using personal devices in clinical areas



Avoid wearing jewelry under PPE



Do not wear cosmetic makeup if re-using PPE



Do not wear gloves in common areas



Do not compress waste in waste container (could aerosolize contaminants)

## During/After Patient Care Activities



Always perform hand hygiene



Ensure a tight seal on N95 respirator



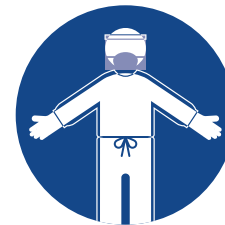
Ensure good fit for all facemasks



Limit touching surfaces in patient care area



Do not readjust PPE in patient care area



Follow transmission-based precautions for COVID-19



Doff any contaminated PPE and dispose appropriately

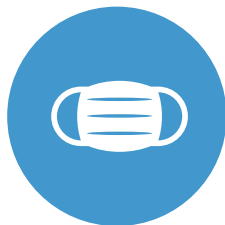
## Taking Breaks



Always perform hand hygiene



Disinfect common surfaces with disinfectant wipes



Facemasks only can be brought into breakroom. Store away from food/beverage. Keep mask on when not eating or drinking.



Do not wear other PPE or bring patient care items to break room



Use disposable equipment/supplies when possible



If re-using equipment, disinfect between each patient



Disinfect with wipe before you type

## Equipment